

Blackpool Victoria Hospital Emergency Department

Monthly Bulletin: January to December 2010

This bulletin provides a breakdown of all attendancesⁱ at Blackpool Victoria Hospital Emergency Department (ED) between January and December 2010.

Between January and December 2010 there were 85,280 attendances to Blackpool Victoria Hospital ED. The month with the highest attendance was May with 8,282 attendances (**Figure 1**). There were more male than female attendances presenting at Blackpool Victoria Hospital ED (males=43,917; 51%).

Figure 2 illustrates age group of ED attendances for each month. The majority of ED attendances were aged 30-59 (n=27,019; 32%) and 30% of attendances were over 60 years old (n=25,877). Most ED attendances were self-referred (49%) or referred by an emergency call/ambulance (38%) (**Table 1**).

Table 2 details the injury group of ED attendances. The majority (90%) of attendances were recorded as other (including other injury and medical attendances). Sports injury accounted for 3% of attendances, assaults 2% and road traffic collisions (RTCs) 2%.

Table 3 shows the location of incident for ED attendances. It shows that almost six in ten of incidents occurred in the home (59%), and nearly a fifth (18%) occurred in public places.

The discharge destination for ED attendances is displayed in **Table 4**. It indicates that over a third (36%) of attendances were discharged with no follow-up treatment. Over two in ten of attendances were admitted into hospital (22%) and referred to their GP (21%).

Assault attendances

Between January and December 2010 there were 2,048 assault attendances to Blackpool Victoria Hospital ED. The month with the highest attendance was July with 220 attendances (**Figure 3**). There were more male than female assault attendances presenting at Blackpool Victoria Hospital ED (males=1,507; 74%).

Table 5 details the age group of assault attendances for each month. The majority of ED assault attendances were aged 15-29 (n=1,036; 51%) and 31% were 30-59 years old (n=636).

Table 6 shows the location of incident for assault attendances. It shows just under half (47%) occurred in a public place, with almost a quarter (24%) occurring in the home.

Table 7 illustrates the general discharge destination for assault attendances to Blackpool Victoria Hospital ED. Under half (46%) were discharged without follow-up treatment, 35% required follow-up treatment. Just under one in twenty (4%) assault attendances were admitted to hospital.

Figure 1: Gender of ED attendances by month, January to December 2010

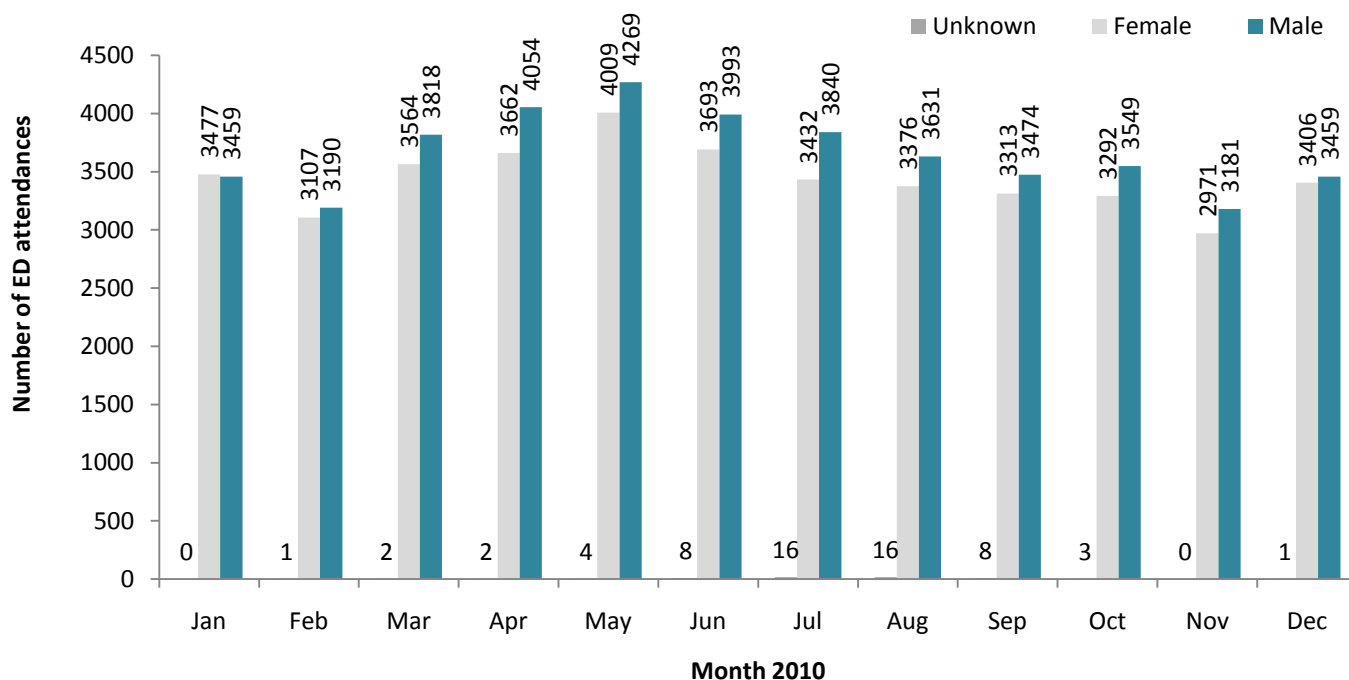


Figure 2: Age group of ED attendances by month, January to December 2010

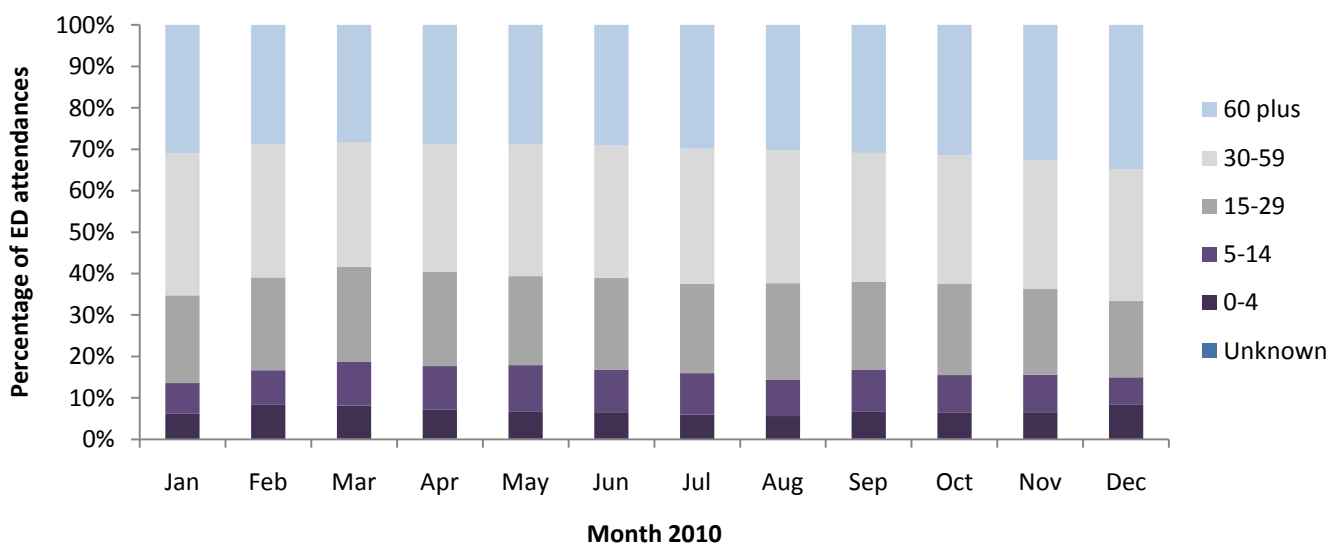


Table 1: ED attendances by source of referral and month, January to December 2010²³⁴⁵

Source of referral	Jan	Feb	Mar	Apr	May	Jun	Jul	Aug	Sep	Oct	Nov	Dec	Total	%
Self referral	3685	3386	3989	4290	4596	4184	3194	3091	2906	2821	2606	2889	41637	49
Emergency call/ambulance	2505	2196	2505	2629	2827	2702	2900	2878	2688	2831	2576	3009	32246	38
Other referrer	181	144	200	212	198	146	146	165	183	161	383	711	2830	3
GP	143	152	177	138	141	141	182	163	250	227	183	232	2129	2
FCMS	67	70	62	77	73	99	425	316	329	340	180	***	2038	2
Walk-in centre	114	123	140	157	208	192	161	166	195	181	92	***	1729	2
Employer	59	45	56	36	43	44	82	83	80	91	22	***	641	1
Police	55	62	54	58	67	57	64	47	45	47	25	7	588	1
NHS Direct	55	46	57	47	47	71	50	32	34	37	19	***	495	1
ED staff	40	41	48	38	22	23	46	44	41	32	17	***	392	0
Other hospital	9	12	28	18	24	16	23	28	17	42	17	***	234	0
Educational establishment	13	17	57	13	29	11	***	***	19	17	25	16	222	0
Optician	***	***	8	***	***	***	6	6	***	9	***	***	48	0
LA/social services	***	***	***	***	***	***	***	***	7	***	5	***	29	0
Prison service	6	***	***	***	***	***	***	***	***	***	***	***	22	0
Total	6936	6298	7384	7718	8282	7694	7288	7023	6795	6844	6152	6866	85280	100

Table 2: ED attendances by injury group and month, January to December 2010⁶

Injury group	Jan	Feb	Mar	Apr	May	Jun	Jul	Aug	Sep	Oct	Nov	Dec	Total	%
Other	6332	5605	6528	6903	7522	6996	6514	6278	6023	6035	5474	6411	76621	90
Sports injury	121	216	350	289	236	217	213	209	287	258	217	70	2683	3
Assault	175	130	161	188	176	181	220	172	144	177	147	177	2048	2
RTC	135	180	171	162	176	139	145	192	167	182	216	172	2037	2
Overdose	141	131	127	128	138	122	156	140	131	152	***	***	1430	2
Deliberate self-harm	32	36	47	48	34	39	40	32	43	40	***	***	461	1
Total	6936	6298	7384	7718	8282	7694	7288	7023	6795	6844	6152	6866	85280	100

Table 3: ED attendances by location of incident and month, January to December 2010

Location	Jan	Feb	Mar	Apr	May	Jun	Jul	Aug	Sep	Oct	Nov	Dec	Total	%
Home	4245	3914	4461	4519	4868	4406	4086	3797	3849	3899	3695	4373	50112	59
Public place	1340	949	1255	1245	1295	1180	1369	1507	1247	1335	1139	1338	15199	18
Other	962	1016	1003	1483	1619	1626	1323	1432	1160	1082	804	770	14280	17
Workplace	248	253	300	297	262	306	338	270	273	304	256	240	3347	4
Educational establishment	140	165	365	174	237	176	169	6	242	191	242	143	2250	3
Unknown	***	***	***	***	***	***	***	11	24	33	16	***	92	0
Total	6936	6298	7384	7718	8282	7694	7288	7023	6795	6844	6152	6866	85280	100

Table 4: ED attendances by discharge destination and month, January to December 2010⁷

Discharge destination	Jan	Feb	Mar	Apr	May	Jun	Jul	Aug	Sep	Oct	Nov	Dec	Total	%
Discharged - no follow-up	2194	2162	2466	2598	2732	2633	2432	2246	2294	2375	2755	3621	30508	36
Admissions	1645	1319	1544	1593	1736	1395	1441	1533	1559	1574	1653	2129	19121	22
Refer to GP	1500	1555	1794	1783	1921	1919	1768	1576	1421	1421	854	625	18137	21
Fracture clinic	584	351	409	498	533	483	442	454	451	402	***	***	4779	6
Did not wait	201	198	301	359	419	356	345	329	260	272	***	***	3141	4
ED clinic	242	200	236	255	311	304	257	256	246	205	***	***	2644	3
Out-patient department	297	238	326	285	252	249	223	204	202	226	***	***	2602	3
Other	***	***	***	7	***	***	***	***	5	***	168	401	609	1
Transfer to other hospital	43	37	31	36	57	42	58	52	46	47	52	73	574	1
Own discharge	36	35	47	59	62	56	54	75	39	61	***	***	554	1
Follow up at local hospital	20	12	40	26	39	26	33	46	45	51	***	***	347	0
Left - before treatment	***	25	30	48	46	31	35	32	34	26	20	***	344	0
FCMS	***	***	***	7	***	7	40	75	41	49	34	***	260	0
Community psychiatric nurse	22	33	19	27	19	30	21	***	23	25	19	***	256	0
Physiotherapist	16	16	22	21	39	35	27	19	25	17	***	***	249	0
Mortuary	18	16	19	23	15	19	25	14	21	20	11	17	218	0
DVT practitioner	14	10	19	21	14	28	19	13	18	11	***	***	168	0
Removed by police	15	20	14	14	19	9	11	20	16	7	***	***	150	0
Practice nurse	15	11	11	12	13	11	14	17	11	13	***	***	132	0
Dentist	13	15	12	12	13	10	***	8	***	6	***	***	100	0
Left - refused treatment	5	***	14	6	12	11	11	11	9	11	5	***	99	0
Not registered with GP	7	12	8	13	5	11	6	***	***	9	***	***	81	0
District nurse	12	7	6	8	11	7	6	7	9	7	***	***	81	0
Alcohol liaison service	8	8	5	***	***	***	8	9	6	6	***	***	61	0
Health visitor	***	7	***	***	***	6	***	***	***	***	5	***	35	0
Social services	***	***	***	***	***	8	***	***	***	***	***	***	30	0
Total	6936	6298	7384	7718	8282	7694	7288	7023	6795	6844	6152	6866	85280	100

Assaults

Figure 3: Number of ED assault attendances by gender and month, January to December 2010

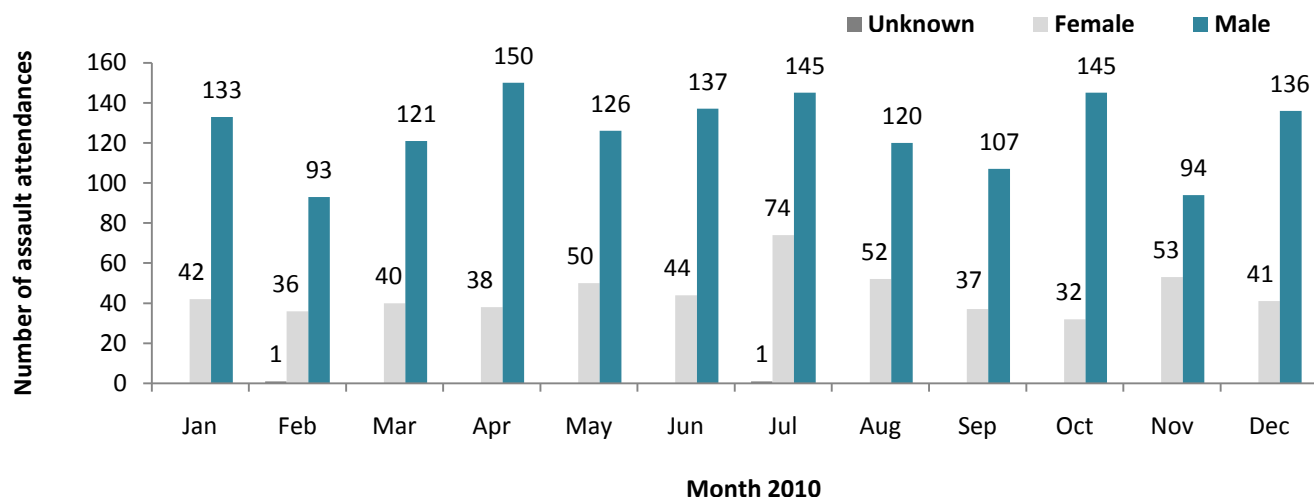


Table 5: ED assault attendances by age group and month, January to December 2010

Age group	Jan	Feb	Mar	Apr	May	Jun	Jul	Aug	Sep	Oct	Nov	Dec	Total	%
Unknown	***	***	***	***	***	***	***	***	***	***	***	***	***	0
0-4	***	***	***	***	***	***	***	***	***	***	***	***	***	0
5-14	99	71	92	7	12	8	***	6	8	12	6	***	327	16
15-29	68	52	53	107	91	110	130	105	69	92	68	91	1036	51
30-59	6	7	9	69	69	60	84	58	59	70	67	78	636	31
60 plus	***	***	***	5	***	***	***	***	7	***	6	5	42	2
Total	175	130	161	188	176	181	220	172	144	177	147	177	2048	100

Table 6: ED assault attendances by location of incident and month, January to December 2010

Location	Jan	Feb	Mar	Apr	May	Jun	Jul	Aug	Sep	Oct	Nov	Dec	Total	%
Public place	77	61	81	94	71	82	121	73	67	90	53	84	954	47
Other	46	35	32	49	42	48	49	60	40	39	39	28	507	25
Home	44	29	38	35	53	42	40	33	32	39	45	57	487	24
Workplace	***	***	***	***	5	***	***	***	***	***	***	***	55	3
Educational establishment	***	***	***	***	5	***	***	***	***	***	***	***	45	2
Total	175	130	161	188	176	181	220	172	144	177	147	177	2048	100

Table 7: ED assault attendances by discharge destination and month, January to December 2010

Discharge destination	Jan	Feb	Mar	Apr	May	Jun	Jul	Aug	Sep	Oct	Nov	Dec	Total	%
Discharged	67	67	74	73	77	77	82	65	59	96	91	105	933	46
Follow-up	85	47	64	75	61	73	87	71	52	56	25	25	721	35
Other	13	***	17	33	28	***	46	29	28	18	20	35	307	15
Admitted	10	***	6	7	10	***	5	7	5	7	11	12	87	4
Total	175	130	161	188	176	181	220	172	144	177	147	177	2048	100

Published February 2011

Johnathan Rooney (Lancashire TIIG Officer)

Centre for Public Health, Liverpool John Moores University, 2nd Floor, Henry Cotton Campus, Liverpool, L3 2ET

Tel: 0151 231 4513 Email: j.rooney@ljmu.ac.uk

Website: www.tiig.info (please note data requests should be made through the website)

¹ For other EDs, TIIG reports on injuries only. However, this report includes all attendances at Blackpool Victoria Hospital ED. This is due to the medical and injury attendances being categorised within the patient group 'other'.

injury groups amongst attendances at Aintree AED which makes it difficult to analyse injury attendances separately

² GP=general practitioner, LA=local authority and FCMS=Flyde Coast Medical Services Ltd

³ Please note that all numbers less than five have been suppressed (with ***) in line with patient confidentiality; and if there is only one number less than five in a category then two numbers will be suppressed to prevent back calculations from totals.

⁴ Please note percentages might not add to one hundred due to rounding.

⁵ The decrease in figures for November and December for some fields is due to a change in IT system at Blackpool Victoria Hospital ED. This has led to certain fields being no longer collected.

⁶ Due to low numbers firework injuries (n=34) have been included under "other".

⁷ DVT=deep vein thrombosis.